

co ✓ *TEC*

Technology Engineering Construction CO ✓ sulting

COMPANY PROFILE

CONTENTS

- 1. GENERAL.**
- 2. QUALITY POLICY.**
- 3. EN ISO 9001:2015.**
- 4. HEALTH AND SAFETY.**
- 5. ORGANIZATION.**
- 6. HARDWARE AND SOFTWARE REGISTER.**
- 7. SERVICES.**
- 8. CLIENTS.**
- 9. EXPERIENCE**
- 10. PERMIT ACQUISITION SERVICES REGISTER**



1. GENERAL

CONTEC was founded on 1998 in Thessaloniki as an independent engineering consultancy company by two partners, who possess long term experience in the oil, gas and chemical products sectors.

On 2002 the same partners were established **CONTEC S.A.**
On October 2006 the engineering firm ELXIS S.A. became a major partner of the Company.

CONTEC S.A. offers engineering, project management, procurement and construction supervision services on new, as well as on existing industrial Projects, with particular interest in the area of Northern Greece. Recently the company is also providing technical services in the field of maintenance and operation of industrial plants.

The company is employing 20 qualified Engineers and has permanent cooperation with 4 associates, all having acquired extensive expertise, both in engineering offices and on industrial plant sites.

The company has an extensive experience in Refinery and Natural Gas Projects, both in engineering and construction management.

CONTEC S.A. has established and applies a Quality Management System for Design, Supervision and Management of Technical Projects, certified from TUV NORD / TUV HELLAS (ISO 9001:2015).

CONTEC has his office in Thessaloniki at the following address:

22 Laertou str. Postal Code 555 10 Pilea-Thessaloniki
Hellenic Post Address : P.O. Box 8801, 57001 Pilea - Thessaloniki

Phone : +30 2310 867 575

Fax : +30 2310 887 226

e-mail : info@conteceng.gr / secretary@conteceng.gr

url : www.conteceng.gr



2. QUALITY POLICY

The objective target of CONTEC S.A. is to supply this kind of services that fully cover our client's needs.

This is being implemented throughout our engagement for:

- ◆ Systematic study of our client's needs and expectations as well as materialization of the improvements needed.
- ◆ Thorough selection during the evaluation of our suppliers, partners and sub-contractors.
- ◆ Continuous upgrade and proper service of our equipment as well as the continuous upgrade of our methods and processes.
- ◆ Selection of capable employees and supply of adequate training as well as the continuous upgrade of our working environment in which every employ can develop its skills and expertness, duties and initiative.
- ◆ Support of every type of internal cooperation and promotion of the team spirit in our company.
- ◆ Improvement of cost effectiveness and maximization of human resources usage in all working levels.
- ◆ Quality Assurance / Quality Control System is established in accordance to the European Standard ISO 9001:2015 and it is applied in all our activities.
- ◆ Following this, CONTEC S.A. aims to maintain the good working environment in which every employ will be promoted and rewarded.

Quality Targets

- ◆ Total compliance with the Law and Regulations that affect our activities.
- ◆ Check of our clients satisfaction
- ◆ Quality cost measurement

CONTEC S.A. is committed to apply the followings:

- ◆ To support the total effort for non-mistaken work and problem solution.
- ◆ To train its employs properly.
- ◆ To recognize every employs liability, under Quality matters.
- ◆ To support every employ to contest against matters that can produce non-conformities.



- ◆ To handle its employs separately as customers and suppliers.
- ◆ To recognize and support every employs effort for improvement.
- ◆ To use only certified suppliers.
- ◆ To lessen the cost and reciprocity where it is possible.
- ◆ To seek for new technologies that lead to products free of defects.
- ◆ To continuously try to acknowledge its customer's needs.
- ◆ To provide to its customer written proof of every corrective action.
- ◆ To update and renew company's Quality policy systematically.

3. EN ISO 9001:2015

CONTEC S.A. has established and applies a complete Quality Assurance / Quality Control System (ISO 9001:2015) for design, construction supervision and management certified by TUV NORD/TUV HELLAS certified body.

CONTEC S.A. has determined and checks all the necessary actions that have to be taken in order to assure that the offered services are according to customer's needs.

CONTEC S.A. has issued and updates a Quality Assurance / Quality Control System, which conforms to the ISO 9001:2015 standard. It is a live system applied, followed and upgraded.

CONTEC S.A. has set Quality System procedures that describe the methodology required for its application.

The field and the extension of the Quality System's procedures are based on the variety of CONTEC offered services and offered products, the complexity and interaction between the procedures as well as in the applied methods, the acquired experience and the training of the personnel that is involved. These procedures include:

- ◆ Procedures describing the needed actions for the application of the Quality System.
- ◆ Procedures describing the sequence and the type of actions necessary for the assurance of the conformity of the offered services, including those that are provided by outer parts.

CONTEC management is responsible for the preparation, issuance and reassurance that the Quality Assurance / Quality Control System are being followed.



The Quality Assurance / Quality Control System contain:

- ◆ A detailed description of the elements of Quality Assurance / Quality Control System and its interactions.
- ◆ Functional Procedures





CERTIFICATE

Management system as per
ISO 9001 : 2015
Quality Management Systems-Requirements

In accordance with TÜV HELLAS (TÜV NORD) S.A., procedures, it is hereby certified that

CONTEC S.A.
22, Laertou Str.
555 10 Thessaloniki
Hellas



applies a management system in line with the above standard for the following scope

Design, Supervision and Management of Technical Projects.

Certificate Registration No. 041 14 0193
Audit Report No. E-2339/2018

Valid from 2017-07-26
Valid until 2020-07-25
Initial certification 2011

TÜV HELLAS (TÜV NORD) S.A. Certification Body

Athens, 2018-07-06

This certification was conducted in accordance with the TÜV HELLAS (TÜV NORD) S.A. auditing and certification procedures and is subject to regular surveillance audits.



TÜV HELLAS S.A. 282, Mesogeion Ave., 155 62 Cholargos, Athens, Greece



4. HEALTH AND SAFETY

Scope

The policy for the Safety, Health and Environment provides specific directions on the application of regulations of Safety, Health and Environment in the working environment during working hours as well as non-working hours, for all employees of CONTEC, the associates and subcontractors.

Responsibilities

It is management's responsibility and duty to apply this Policy and to confirm the conformity of all Personnel and associates of company with this.

Regulations

CONTEC after a deep investigation of all likely complications of Safety, Health and Environment issues in the working or out of working environment, has adopted the following regulations:

Health and Safety

CONTEC:

1. Defines that these requirements are responsibility of each Director, Manager and employ.
2. Provides and maintains secure and healthy working environment, equipment and work systems.
3. Ensures that the products and the services provided meet the higher possible level of technical integrity at all duration of their design duration.
4. Provides suitable information, equipment, education and supervision on subjects of Health and Safety
5. Ensures that are available the suitable procedures and directives and that they are followed in the implementation of work
6. Complies with the local beginnings, the national and international legislation and regulations and industrial models (Directives 89/931/ EK and 91/383/ EK)



7. Systematically, determines the sources of danger, estimates and takes measures of control or elimination of possible dangers, against this policy's aims and publishes the results in each participant.

Environment

CONTEC:

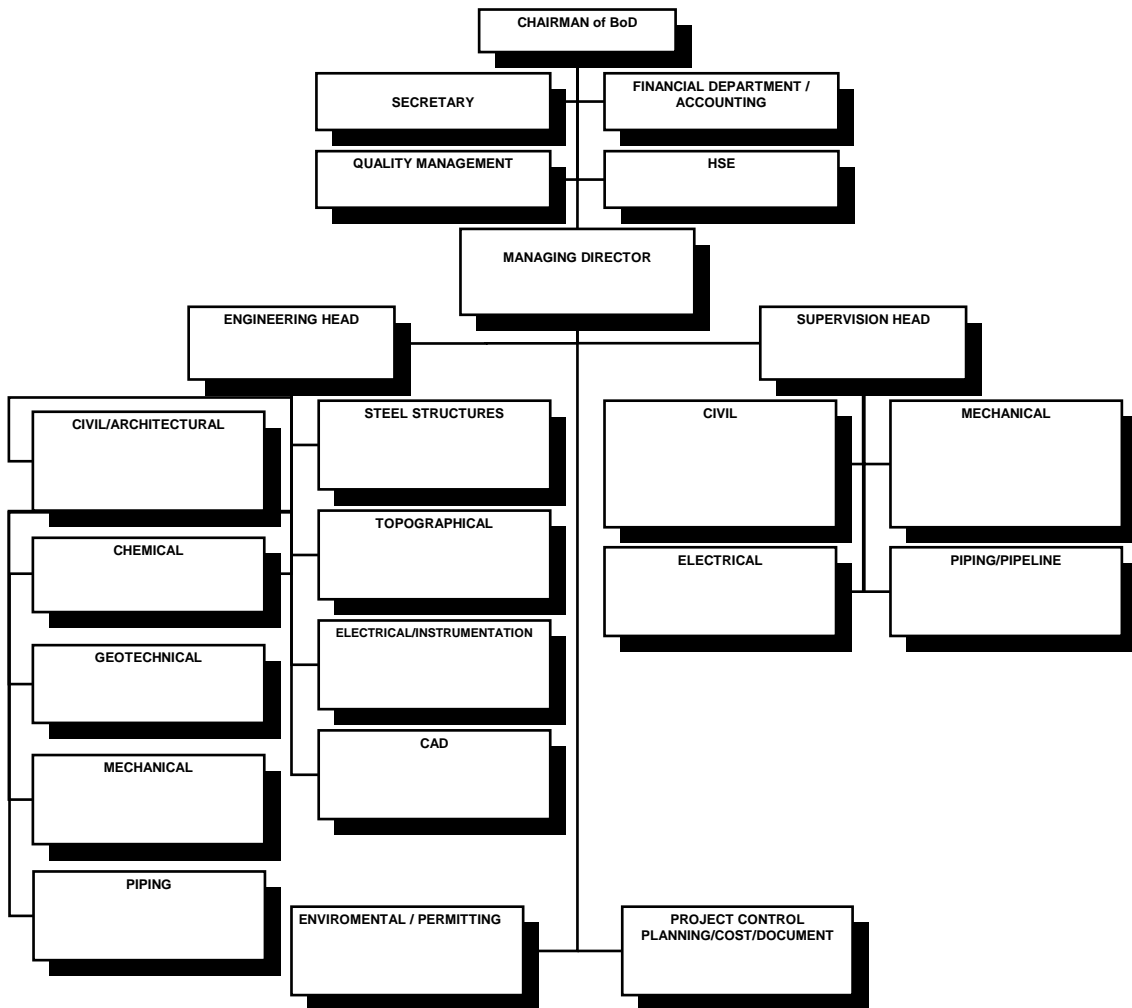
1. Defines that these requirements are responsibility of each Director, Manager and employ.
2. Functions and manages the resources so that it contributes in the energy saving and with raw material that are friendly to the environment.
3. Ensures that the products and the services provided minimize the long-lasting effects in the Environment.
4. Provides suitable information, equipment, training and supervision on Environmental issues.
5. Ensures that are available the suitable procedures and directives and that they are followed in the implementation of work
6. Complies with the local beginnings, the national and international legislation and regulations and industrial models.

For the all work that is undertaken, the suitable measures of Healthy Safety and Environment (HSE Plans) are studied and applied.



5. ORGANISATION

ORGANISATION CHART



6. HARDWARE AND SOFTWARE

A. HARDWARE

PC :	1	Intel Pentium (R) 4, Laptop	- CPU	2.80	GHz	-	512	RAM
	1	Intel Pentium (R) II, Laptop	- CPU	1,4	GHz	-	256	RAM
	2	Intel Pentium (R) 4	- CPU	2.60	GHz	-	512	RAM
	1	Intel Pentium (R) 4	- CPU	1.80	GHz	-	384	RAM
	2	Intel Pentium (R) 4	- CPU	2.53	GHz	-	512	RAM
	1	Intel Pentium (R) II	- CPU	400	MHz	-	128	RAM
	1	Intel Pentium 4	- CPU	2.00	GHz	-	504	RAM
	1	Intel Pentium 4	- CPU	3.00	GHz	-	512	RAM
	1	Intel Pentium 4	- CPU	3.20	GHz	-	1024	RAM
	1	Celeron (R)	- CPU	2.66	GHz	-	240	RAM
	1	Intel Pentium 4	- CPU	3.00	GHz	-	504	RAM
Monitors:	1	EIZO (TFT) FlexScan L 367					- 15"	
	1	NEC AccuSync LCD 73v					- 17"	
	1	LG (TFT) Flatron L1718S					- 17"	
	1	SONY Multiscan 200 ES					- 17"	
	1	DELL					- 17"	
	1	EIZO FlexScan F 55s					- 17"	
	2	PHILIPS 109 B					- 19"	
	1	HYUNDAI 90W					- 19"	
	5	SAMSUNG SyncMaster 2246					- 22"	
1	EIZO (TFT) FlexScan L 367					- 15"		
Plotter/ Printers:	1	KONICA MINOLTA 350PS					- (A4 / A3)	
	1	Printer HP DesignJet 110 plus					- (A4/A3/A2)	
	1	Canon IPF 770					- (A4/A3/A2/A1/A0)	
	1	KONICA MINOLTA C35D					- (A4)	
Fax/ Scanner:	1	KONICA MINOLTA 350PS					- (A4 / A3)	
	1	HP G3010					- (A4)	
Photocopy machine :	1	KONICA MINOLTA 350PS					- (A4 / A3)	

B. SOFTWARE

- Engineering
 - ◆ STAAD PRO V8i
 - ◆ AutoCAD 2012
 - ◆ CadWorks 2013.
 - ◆ FESPA 2004 for Structural Design.
 - ◆ AUTOFRAME for Steel Structures Design
 - ◆ POLIS
 - ◆ 4M, AUTOFINE, ADAPT-FCALC
 - ◆ CAESAR II 5.10
 - ◆ INSTANT
 - ◆ MULTISTEEL
 - ◆ RELUX
 - ◆ ECODIAL Merlyn Gerin
 - ◆ A.F.T. Fathom

- * Project Management
 - ◆ PRIMAVERA, Project Manager 2.0
 - ◆ MS PROJECT, Ver. 4.1
 - ◆ Primavera Sure Trak

- Office
 - ◆ Windows 10 / 7 / XP / XP PRO
 - ◆ OFFICE 2007 / 2010
 - ◆ ABBYY Fine Reader 6.0 (OCR)

7. SERVICES

CONTEC provides a complete range of engineering, consultancy, management and technical services for industrial projects and building complexes, including:

- ◆ Project Management.
- ◆ Cost Estimation and Control.
- ◆ Planning & Scheduling.
- ◆ Process Engineering Design.
- ◆ Quality Assurance & Control.
- ◆ Procurement.
- ◆ Construction Management & Supervision.
- ◆ Commissioning & Start - up Assistance.
- ◆ Operation and Maintenance.
- ◆ Permit Issuance.

The above services can be supplied in any combination to meet the particular requirement of the client.

In addition, technical, estimating and commercial services are offered to assist in the planning and evaluation of new projects.

7.1 PROJECT MANAGEMENT

For the Project administration, CONTEC provides the following services:

- Customer Consultant
- Project Management and Control
- Contract Administrations
- Processes of work
- Review, inspection, approval of:
 - Project Budget
 - Project Time schedule
 - Cost / Cash flow reports
 - Object Change
 - Project Specifications
 - Supplies
 - Construction Program
 - Operation and Maintenance manual



The size, the nature and the detail requirements of each project determine the composition and the organization of its management team.

7.2 BASIC DESIGN

The Customer's requirements are materialized by CONTEC by the elaboration of the basic design package. For this aim, CONTEC uses its human resources and its material and technical infrastructure, as well as the offered services from specialized houses, depending on the requirements and the type of work.

The main parts of the basic design package are:

- Flow charts
- Balances of mass and energy
- Capacity of working team and attributes of products
- Table of equipment
- Specifications of basic activities
- Topographical survey
- General Layout
- Plan Views / Equipment Layout
- Safety Policy
- Auxiliary supplies consumptions
- Piping sizing
- Piping & Instrumentation diagrams

7.3 COST CONTROL AND ESTIMATION

CONTEC has developed five distinguishable types of budget depending on the phases of development of the project:

- Initial concept
- Cost estimation study
- Basic Design
- Detail Engineering
- Implementation

The budgets are based on information that comes from cost curves or real price offers.

For the all above types of budget, the issues that are taken into account are the base, the conditions, as well as the divergences.

Cost estimation is held during various project phases, with the total budget submerged into separated sub-projects and cost points, as it is required for the continuous expenses estimation.

7.4 PLANNING AND SCHEDULING

Project planning is carried out during all phases of the project execution and covers the general as well as the more detailed time planning, as it is required by the project progress. CONTEC utilizes all computerized techniques/tools to enable identification of potential problem areas and to define alternative approaches to project execution. Such techniques are:

- Bar charts
- Gantt bar charts (milestones)
- Networking
- CPM (critical path method)
- PERT (project evaluation and review techniques)
- WBS (Work breakdown structure)

The software that is used is the MS Project, the Suretrack and the Primavera

7.5 DESIGN ACTIVITIES

The design activities include a series of stages, which are followed form CONTEC in order to achieve the best approach and analyzation of the activities.

For more complete elaboration of the studies, CONTEC collaborates with specialized associates or engineering companies that possess the relative know-how.

Depending on the product or the service, this stages are shaped, modified or they are erased by each study so as to attribute in the best way the process, to decreased the cost and the design period, in combination with the improvement of quality of product.

Formal stages that are included in the design activities are:

- Planning before the beginning of productive process
 - Planning Scope
 - Analysis of current requirements
 - Control of similar activities
 - Resolution of problems, process design capture and recording of solutions
 - Presentation of results
- Design during construction process
 - Development and application of process
 - Trial – Control
- Installation of production line - Information on future studies of activities
 - Application
 - Assessment - Evaluation and conclusions
- Re-designing of part or all stages of design activities for all project phases

With this way CONTEC ensures the absolute identification between the client's needs and the design study.

7.6 PROCESS ENGINEERING

Based on input by the Client, CONTEC translates his requirements into basic and subsequently detailed process engineering packages. For this purpose, CONTEC either utilizes its own engineering capabilities or requests basic and/or detailed information from Licensors.

The main items of the process engineering package are:

- Process flow scheme(s)
- Heat and mass balance
- Product yields and properties
- Equipment lists
- Process data sheets
- Plot plan/layout
- Safety philosophy
- Utilities consumption
- Line sizing
- Piping and instrument flow diagrams

7.7 DETAILED ENGINEERING

The offered services by CONTEC, for this very important phase of a project can be summarized as follows:

- Material and Equipment selection:
 - Design specifications
 - Material and Equipment specifications
 - Inquiry request
 - Technical evaluation of offers
- Detailed design of the following disciplines:
 - General and Detailed Building and Equipment Layouts
 - Pressure Vessels & Tanks
 - Mechanical Engineering
 - Electrical Engineering
 - Civil Engineering (Architectural, Structural, Infrastructures)
 - Piping Design
 - Instrumentation Design
 - Heating, ventilation and air-conditioning
 - Fire protection

Before proceeding with the detailed engineering design, CONTEC agrees with the Client his particular requirements with regards to the applicable Codes and standards. Also an agreement is made with the Client as to the practices, procedures, documentation systems, symbols etc. to be adopted.

7.8 QUALITY ASSURANCE & CONTROL

CONTEC undertakes the development and assurance of qualitative systems of construction or industrial projects.

Usually the quality control system includes:

- The Organization of the project, its Organization chart and the Description of work.
- The co-ordination and the control of the project schedule according to the Quality Assurance System.



- The inspection and the control of equipment.
- The development of procedures for the qualitative management of work.
- The qualitative management of technical documents and drawings.
- The publication of work directives.
- The publication of qualitative control directives and observation - completion of quality control documents and tests.

7.9 PROCUREMENT

The CONTEC observes and continuously renews lists of suppliers of materials and equipment, manufacturers and contractors. CONTEC has a policy, not to negotiate with contractors and suppliers, but holds inquiries so that to lead to the optimum price result.

CONTEC has developed a range of supplies' forms, as:

- Offer Application
- Directives of inquiry
- General terms and conditions
- Evaluation of offers
- Directives of supply
- Acceleration of markets
- Reports of progress

The requirements in drawings and documents, as well as the time in which these are necessary, are thoroughly assigned in the offer application and afterwards in the final order.

The technical evaluation of offers becomes aiming at the ascertainment of complete agreement with the technical specifications, and afterwards the commercial evaluation ensures the complete alignment with the terms and the conditions of supply.

CONTEC still undertakes the management of inspections and qualitative controls of materials and equipment depending on the specifications.

The acceleration of purchases, even in the manufacturer's seat, ensures the convenient arrival of materials and equipment.

7.10 CONSTRUCTION MANAGEMENT

For the management of the construction of a project, CONTEC provides the following services:

- Specifications of work
- Selection of contractors/subcontractors
- Co-ordination of work
- Supervision of construction
- Qualitative controls and inspections
- Issuance and completion of qualitative control forms
- Reports

CONTEC maintains and updates lists of subcontractors experienced in various fields of construction and fabrication, and also assists them in following procedures and standards appropriate for quality work.

7.11 TESTING – FINAL RECEIPT

In the particular phase of a project, CONTEC provides the following services:

- Control of right execution of the individual project works, according to the required specifications.
- Completion and approval of the quality forms for every of the individual works.
- Presence and confirmation of successful implementation of required tests and check of equipment, networks and activities.
- Approval of operation processes.
- Confirmation of right operation of sub systems and synchronization between them.
- Supervision of start-up.
- Start-up Testing.
- Final receipt of work with signed good performance certificate.

7.12 OPERATION & MAINTENANCE

In the industrial work and in the installations of systems and sub systems of control and production, CONTEC offers the following services:



- Issuance - approval of operation manual.
- Issuance of processes of handling of equipment.
- Publication of preventive maintenance program, according to the manufacturer's standards.
- Issuance of non-scheduled maintenance and damages repair procedures.
- Issuance of spare parts list, needed for the scheduled maintenance.
- Organization of supply and storage of spare parts.

7.13 PERMIT ISSUANCE

CONTEC undertakes, as a contractual obligation but also as independent work, the development of all relative studies and required documents from the Greek Legislation, on the publication of following Permits that concern the constitution of industrial and smaller trades or the upgrade of already existing units:

- Installation Permit
- Town Planning Authorities Permit
- Archaeological Permit
- Supply and use of Natural Gas Permit
- Environmental Terms Permit
- Effluent Disposal Permit
- Permitting for signing and construction of Road Nodes
- Minor Scale Works Permit
- Deviation of Height Permit
- Fire Fighting Permit
- Operation Permit
- Permitting near Shore and Beach areas

8. CLIENTS

INDUSTRIES

PHOSPHORIC FERTILIZERS INDUSTRY S.A

EKO – ELDA S.A.

EKO S.A.

ELDA S.A.

HELLENIC PETROLEUM S.A.

ENERGEIAKI THESSALONIKIS S.A.

MOTOR OIL HELLAS

HELIODOMI S.A.

N. ZIGOURAKIS S.A.

HAITOGLOU S.A.

AQUA CHEM ΕΠΕ

CCT

CHIMAR ABEE

COPERION

DIAXON ABEE

FILKERAM JOHNSON AE

HELLENIC STEEL Co

INTERSOLAR

MAGALDI

POLYFORM

SHELMAN

TEFIL



CONSTRUCTION COMPANIES

AKTOR S.A.

ANAGNOSTOU

ASPATE / TEKTON

VIOMER

VIOTEK

VOGIATZIS

GEK

EKME

ENET

ERGOTEM

THEMELIODOMI

THERMI SERRES

MAK

MEKASOL

METALLON

STELMA

ΣTEMA

PANTECHNIKI

ROPI

SKARLATOUDIS

DAMCO

ELTER

J&P AVAX

ITA

KINTEC

METRON

TECNIMONT



VATECH

ENGINEERING COMPANIES

ASPROFOS

DIARXON

ELXIS

FOSTER WHEELER

GTL

INTERGEO

POERNER

TRACTEBEL

PUBLIC COMPANIES

PPC

DEPA

DESFA

OSE

OIL & GAS TRADING COMPANIES

AEGEAN SLOPES

AIR BP

ATLANTIS

BP

BP GAS

JET OIL

CORAL

MOBIL



TRADE COMPANIES

EPA THESSALONIKI

St. LOUKAS HOSPITAL

PRINOS S.A.

SANI S.A.

ALPHA LOGISTICS

PROMETHEUS GAS

ATHENS INTERNATIONAL AIRPORT (AIA)



9. **EXPERIENCE**



PROJECTS REGISTER

No.	OWNER ~ CLIENT	Contract No.	PROJECT	PROVISION OF SERVICES										YEAR OF AWARD	YEAR OF COMPLETION	BUDGET OF PROJECT (Th. €)	COMPENSATION (Th. €)	
				BID PREPARATION	PERMITS ACQUISITION	PROJECT MANAG.	CIVIL ENG.	MECH. ENG.	EL. / INSTR. ENG.	QUALITY CONTROL	PROCUREMENT	ENGINEERING REVIEW	CON. MAN. / SUPERV.					
1	N. ZYGOYRAKIS S.A.	CT-102	EMULSION PRODUCTION PLANT - LAVRIO	✓		✓	✓	✓	✓	✓				✓	1998	2000	3.200	112
2	STELMA L.T.D.	CT-104	NEW STORAGE WAREHOUSE - THESSALONIKI.		✓	✓	✓		✓					✓	1998	1999	320	21
3	BP-MOBIL ~ METRON LTD	CT-107	INSTALLATION OF VRU - KALOHOHI					✓		✓		✓		✓	1998	1998	450	10
4	HEL.PE / THES. ~ THEMELIODOMI	CT-109	NEW LPG LOADING FACILITIES	✓			✓	✓							1999	1999	450	12
5	HEL.PE/THES. ~GEK/ASPATE	CT-112	ISOMERIZATION UNIT U-300	✓			✓	✓	✓						1998	1999	5.300	42
6	HEL.PE / THES.~TECNIMONT	CT-115	POLYPROPYLENE PLANT 176.000 T/Y		✓		✓	✓	✓				✓	✓	1998	2002	150.000	530
7	HEL.PE/BOPP ~ DIARXON/AF	CT-116	P.P. FILM PRODUCTION - KOMOTINI					✓	✓	✓			✓	✓	1998	1999	47.000	65
8	HEL.PE / THES. ~ J&P	CT-118	PP PLANT STEEL STRUCTURES		✓		✓								1999	2000	7.400	80
9	SHELL S.A.	CT-119	SUPERVISION OF PRODUCT PIPELINE SHELL - JETOIL			✓								✓	1998	1999	180	16
10	CHATZILOUKAS S.A. ~ HEL. TECHNODOMIKI	CT-125	POLYMER PLANT-KOMOTINI					✓	✓				✓		1999	2000	4.400	20
11	HEL.PE / THES. ~ EKME	CT-126 / CT-127	UTILITIES EXPANSION-DEMINEALIZATION UNIT U-900		✓		✓								1999	2000	450	18
12	SHELMAN	CT-129	WATER & FIRE FIGHTING SYSTEMS - KOMOTINI					✓						✓	1999	2000	32.000	40
13	MINISTRY OF JUSTICE ~ AKTOR	CT-131	RENOVATION OF DE LA SALLE BUILDING AT THESSALONIKI		✓			✓	✓						1999	2003	5.300	60
14	TEFIL	CT-142	LUB OIL WAREHOUSE AND DEPOT SINDOS-THESSALONIKI	✓	✓	✓	✓	✓	✓	✓	✓		✓	2000	2002	470	35	
15	HEL.PE/THES.	CT-139	PP PLANT OPERATING MANUALS TRANSLATION			✓									2000	2001	NA	10
16	PPC ~ MAGALDI / ASPATE	CT-144	PPC UNIT 3-MEGALOPOLIS MAP SYSTEM				✓								2000	2000	100	12

PROJECTS REGISTER

No.	OWNER ~ CLIENT	Contract No.	PROJECT	PROVISION OF SERVICES										YEAR OF AWARD	YEAR OF COMPLETION	BUDGET OF PROJECT (Th. €)	COMPENSATION (Th. €)
				BID PREPARATION	PERMITS ACQUISITION	PROJECT MANAG.	CIVIL ENG.	MECH. ENG.	EL. / INSTR. ENG.	QUALITY CONTROL	PROCUREMENT	ENGINEERING REVIEW	CON. MAN. / SUPERV.				
17	HEL.PE / THES. ~ CCT / ERGOTEM	CT-141	NEW BOILER UNIT			✓	✓	✓		✓		✓	✓	2000	2001	900	33
18	EPA THESSALONIKI ~ ETETH	CT-145	EXTENSION OF MEDIUM PRESSURE N.G. PIPELINE IN THESSALONIKI MUNICIPALITY					✓	✓			✓		2000	2000	NA	8
19	SHELL (ASTRON OIL)	CT-146	REVAMPING OF SEWER SYSTEM RIO-PATRA				✓	✓						2000	2001	130	11
20	HEL.PE / THES. ~ TETRAGON	CT-148	REVAMPING OF ADMINISTRATION BUILDING	✓	✓			✓	✓					2001	2001	820	10
21	ILIODOMI	CT-147	PHOTOVOLTAIC MODULES PLANT	✓	✓		✓	✓	✓	✓		✓	✓	2001	2004	18.000	260
22	HEL.PE/THES	CT-149	NEW CRUDE OIL UNIT, LPG		✓									2001	2003	13.000	15
23	DIAXON	CT-151	BOPP WAREHOUSE EXTENSION					✓	✓			✓		2001	2001	1.300	17
24	SHELL S.A.	CT-153	NEW ISLAND / INTERCONNECTING KALOHORI										✓	2001	2001	160	15
25	EPA THESSALONIKI	CT-157	EXTENSION OF N.G. MEDIUM PRESSURE SYSTEM TO WEST SALONICA	✓			✓	✓	✓					2001	2001	1.000	50
26	SHELL ~ KINTEC	CT-161	REVAMPING OF TRACK LOADING HANIA - CRETA	✓		✓	✓	✓		✓	✓	✓	✓	2001	2002	1600	60
27	St. LOUKAS	CT-167	EXTENSION OF St. LOUKAS HOSPITAL THESSALONIKI	✓	✓	✓		✓	✓	✓				2002	2004	17.600	130
28	SHELL S.A.	CT-171	NEW ISLAND (No 5) - KALOHORI DEPOT	✓	✓	✓	✓	✓	✓	✓			✓	2002	2002	970	40
29	SHELL S.A.	CT-174	REVAMPING OF SEWER SYSTEM - PERAMA DEPOT	✓	✓		✓	✓	✓	✓			✓	2002	2003	200	30
30	SHELL S.A.	CT-178	DIESEL OIL TANK T-16 - KALOHORI	✓	✓	✓	✓	✓	✓	✓			✓	2002	2003	1.500	30
31	SHELMAN	TΔ016/03/KA/αγ	MELAMINE FILM PRODUCTION PLANT - KOMOTINI	✓	✓	✓	✓	✓	✓	✓			✓	2002	2005	5.000	230

PROJECTS REGISTER

No.	OWNER ~ CLIENT	Contract No.	PROJECT	PROVISION OF SERVICES									YEAR OF AWARD	YEAR OF COMPLETION	BUDGET OF PROJECT (Th. €)	COMPENSATION (Th. €)	
				BID PREPARATION	PERMITS ACQUISITION	PROJECT MANAG.	CIVIL ENG.	MECH. ENG.	EL. / INSTR. ENG.	QUALITY CONTROL	PROCUREMENT	ENGINEERING REVIEW					CON. MAN. / SUPERV.
32	EPA THESSALONIKI	CT-183	N.G. DISTRIBUTIONS PIPELINES TO INDUSTRIAL AREAS OF SINDOS AND THERMI	✓			✓	✓	✓					2003	2003	NA	21
33	SHELL S.A.	CT-185	RELOCATION OF PRODUCTS IN PERAMA DEPOT	✓	✓		✓	✓	✓	✓			✓	2003	2003	240	30
34	PPC ~ ERGOTEM	CT-187	STEEL STACK (HANIA) - BOILER / ASH DISPOSAL (MEGALOPOLI)				✓	✓						2003	2003	400	25
35	EPA THESSALONIKI	ΔΠ030121	MEDIUM AND LOW PRESSURE DISTRIBUTION SYSTEM IN THESSALONIKI REGION							✓			✓	2003	2006	3000	359
36	HELPE ~ COPERION	CT-189	PP SILOS (10 No)		✓		✓	✓	✓				✓	2003	2004	4000	50
37	ENERGIAKI ~ VATECH/ENET/POERNER	CT-192	CCPP 390 MW PLANT THESSALONIKI		✓		✓	✓	✓				✓	2003	2006	190.000	430
38	VFL	CT-202	VARIOUS PROJECTS	✓			✓	✓						2004	2004	300	15
39	HELPE ~ 'MAK	CT-211	NEW DIESEL LINE 8"				✓	✓						2004	2005	320	15
40	HELPE ~ ANAGNOSTOU	CT-214	CRUDE OIL RECIRCULATION				✓	✓						2004	2005	250	10
41	ENERGIAKI	CT-212	HV 400 KV CABLE ROUTING		✓		✓							2004	2005	6.000	25
42	DEPA	1427/05	INSTALLATION OF MPTS NATURAL GAS PIPELINE KATERINI							✓			✓	2005	2006	1.100	102
43	HELPE ~ ATERMON	CT-227	POWER PLANT UNIT 5,5 MW		✓		✓	✓	✓					2005	2007	360	25
44	DEPA	1511/06	ENGINEERING, CONSTRUCTION, PROCUREMENT OF 2 ND GROUP OF M/R STATIONS							✓			✓	2006	2009	4.535	312
45	DEPA	1611/07	HAZOP STUDY FOR 2 ND GROUP OF M/R STATIONS			✓							✓	2007	2007	4.535	20

PROJECTS REGISTER

No.	OWNER ~ CLIENT	Contract No.	PROJECT	PROVISION OF SERVICES										YEAR OF AWARD	YEAR OF COMPLETION	BUDGET OF PROJECT (Th. €)	COMPENSATION (Th. €)	
				BID PREPARATION	PERMITS ACQUISITION	PROJECT MANAG.	CIVIL ENG.	MECH. ENG.	EL. / INSTR. ENG.	QUALITY CONTROL	PROCUREMENT	ENGINEERING REVIEW	CON. MAN. / SUPERV.					
46	EPA THESSALONIKI	ΔΠ 050103	INSTALLATION OF N.G. LOW & MEDIUM PRESSURE PIPELINE IN THESSALONIKI								✓			✓	2005	2006	10.000	130
47	DEPA ~ ELTER	4914	20" N.G. PIPELINE MAVRONERI - ANTIKYRA				✓	✓	✓	✓					2006	2007	6.500	94
48	THERMI SERRES ~ ITA / VIOMER	CT-235	DISTRICT HEATING POWER PLANT AND DISTRIBUTION NETWORKS - SERRES		✓	✓	✓	✓	✓	✓			✓	✓	2006	2008	35.000	235
49	EPA THESSALONIKI	ΔΠ 060107	MEDIUM AND LOW PRESSURE DISTRIBUTION SYSTEM							✓			✓	✓	2005	2007	11.000	325
50	DEPA	1531/06	SUPERVISION OF MPTS N.G. PIPELINE AT PLATI, KATERINI							✓			✓	✓	2006	2006	220.000	20
51	DEPA	1577/06	SUPERVISION OF LOW PRESSURE N.G. PIPELINE IN KATERINI							✓			✓	✓	2007	2007	88.000	13
52	DEPA	1579/06	MPTS / LPDS KATERINI - KILKIS - SERRES - KAVALA - DRAMA - LAMIA - CHALKIDA - THIVA							✓			✓	✓	2007	2009	28.000	845
53	HELPE ~ SINI	CT-242	TAIL GAS UNIT - HELPE THESSALONIKI		✓								✓	✓	2007	2008	2.400	95
54	PUBLIC POWER COMPANY ~ MEKASOL ATEBE	CT-244	AHS ALIVERI-CONSTRUCTION OF NEW LFO TANKD, INTERCONNECTION WITH EXISTING NETWORKS & DEMOLITION OF THE EXISTING TANKS		✓		✓	✓	✓	✓				✓	2007	2008	4.800	92
55	DEPA ~ PANTECHNIKI S.A	CT-245	10" N.G. PIPELINE AMBELIA - KARDITSA - TRIKALA				✓	✓	✓						2007	2008	4.800	125
56	PETROMAXX ~ METALLON	CT-247	PETROMAXX REFINERY			✓		✓	✓						2007	2008	190.000	247
57	ATLANTIS	CT-249	INSTALLATION OF BITUMEN TANKS		✓		✓	✓	✓					✓	2007		1.800	60
58	NORTH AEGEAN SLOPES	CT-250	INSTALLATION OF SLOP TANKS		✓		✓	✓	✓					✓	2007		750	36
59	DESFA ~ J&P AVAX	CT-255	BYPASS CONSTRUCTION WITH HOT TAPPING METHOD FOR THE REPLACEMENT OF TWO INSULATING COUPLINGS IN N.G. H.P. PIPELINE 30"				✓	✓	✓						2007	2007	400	6
60	HELPE	CT-256	THESSALONIKI REFINERY-GREECE / HELPE REVAMPING - NAPHTHA REFORMER PROJECT		✓										2008	2011	N/A	39

PROJECTS REGISTER

No.	OWNER ~ CLIENT	Contract No.	PROJECT	PROVISION OF SERVICES										YEAR OF AWARD	YEAR OF COMPLETION	BUDGET OF PROJECT (Th. €)	COMPENSATION (Th. €)	
				BID PREPARATION	PERMITS ACQUISITION	PROJECT MANAG.	CIVIL ENG.	MECH. ENG.	EL. / INSTR. ENG.	QUALITY CONTROL	PROCUREMENT	ENGINEERING REVIEW	CON. MAN. / SUPERV.					
61	ENELCO ~ ENEL	CT-257	CCPP 430 MW LIVADIA ENELCO		✓		✓	✓	✓				✓		2008	TERMINATED	3.000	199
62	ERGOSE ~ J/V AKTOR PANTECHNIKI	CT-263	RELOCATION OF FOURTY FUEL PIPELINES IN THE DEPOT OF SHELL-PERAMA				✓	✓							2008	2008	180	20
63	ENELCO ~ GTL	CT-264	CCPP 430 MW LIVADIA										✓		2008	TERMINATED	3.000	41
64	AIR BP NORTH EAST EUROPE ~ AR BP TIRANA AIRPORT	CT-268	RELOCATION OF AIR BP FUEL DEPOT AT TIRANA AIRPORT				✓	✓	✓	✓	✓				2008	2009	850	53
65	PETROMAXX ~ METALLON	CT-269	ATAS REFINERY - MERSIN TURKEY				✓	✓	✓	✓					2008	HOLD	250.000	1450
66	HELPE ~ FOSTER WHEELER	PS D40/137/08	HELPE REVAMPING - DEG FOR THE ELECTRICAL SUBSTATIONS K & J				✓	✓	✓	✓			✓		2008	2010	35.000	100
67	HELPE ~ FOSTER WHEELER	PS D40/136/08	HELPE REVAMPING - CIVIL ENGINEERING SERVICES				✓			✓			✓		2008	2010	35.000	69
68	HELPE ~ FOSTER WHEELER	PS D40/135/08	HELPE REVAMPING - CIVIL ENGINEERING SERVICES FOR CABLE TRENCHES				✓			✓			✓		2008	2009	35.000	12
69	DEPA	CT-272	SUPERVISION OF NATURAL GAS PIPELINE MP CHALIKDA						✓					✓	2009	2012	9.000	274
70	DESFA ~ J/V PROMETHEUS GAS & STG	CT-275	DETAILED ENGINEERING FOR N. MESSIMVRIA GAS COMPRESSOR STATION - STATION PERMIT ACQUISITION		✓		✓	✓	✓	✓					2008	2012	54.000	510
71	HELPE	CT-277	INTERCONNECTING PIPERACK				✓								2009	2009	280	9
72	HELPE	CT-278	TRUP-PROCESS & UTILITIES INTERCONNECTION LINES					✓							2009	2009	1.500	20
73	PUBLIC POWER COMPANY	CT-279	AHS ALIVERI-CONSTRUCTION OF NEW LFO STORAGE PLANT - ADDITIONAL STUDIES				✓	✓	✓						2009	2011	4.800	41
74	DEH / ERGOTEM	CT-284	PPC IN LIMNOS, SIROS,SAMOS				✓								2009	2009	140	7
75	ELPE BEA ~ COPERION	CT-286	NEW SILOS				✓		✓				✓		2009	2011	3.000	142

PROJECTS REGISTER

No.	OWNER ~ CLIENT	Contract No.	PROJECT	PROVISION OF SERVICES										YEAR OF AWARD	YEAR OF COMPLETION	BUDGET OF PROJECT (Th. €)	COMPENSATION (Th. €)		
				BID PREPARATION	PERMITS ACQUISITION	PROJECT MANAG.	CIVIL ENG.	MECH. ENG.	EL./ INSTR. ENG.	QUALITY CONTROL	PROCUREMENT	ENGINEERING REVIEW	CON. MAN. / SUPERV.						
76	ΕΛΠΕ/ ΒΕΑ	CT-287	FIRE FIGHTING STUDY TRUP					✓								2009	2009	NA	11
77	ΕΛΠΕ/ ΒΕΑ ~ TECHNIPETROL	CT-288	INTERCONNECTION PIPING STUDY					✓								2009	2010	NA	20
78	DESFA S.A. ~ J&P AVAX	CT-290	HOT TAPPING - KOMOTINI PREFECTURE				✓	✓	✓		✓					2009	2010	350	10
79	ΟΣΕ ~ ELXIS S.A.	CT-293	MAINTENANCE BUILDING IN THRIASIO				✓	✓	✓							2009	2009	NA	30
80	ΕΜΠΕΙΡΙΑ Α.Ε	CT-294	STABLING & FOOTBRIDGE FINAL STUDY IN Ag. IOANNIS RENTI				✓	✓	✓							2009	2009	NA	30
81	DESFA S.A. ~ J&P AVAX	CT-301	HOT TAPPING - THIVA PREFECTURE				✓	✓	✓		✓					2010	2010	900	23
82	CORAL ENERGY GROUP (ex. SHELL)	CT-303	REVAMPING OF PERAMA DEPOT FOR MARINE FUEL OIL LOADING	✓	✓		✓	✓	✓							2010	HOLD	3.600	79
83	DEPA S.A. ~ ELXIS S.A.	CT-304	CONSULTANCY SERVICES							✓		✓	✓			2010	2012	9.000	170
84	ATHENS INTERNATIONAL AIRPORT ~ INTERGEO	CT-306	STUDY ON SURFACE WATER ISSUES AT ATHENS INTERNATIONAL AIRPORT	✓			✓	✓	✓							2010	2011	3.500	27
85	MOTOR OIL HELLAS S.A.	CT-308	MOTOR OIL HELLAS - NEW TANK FARM TRUCK LOADING FACILITIES FOR CHEMICALS	✓	✓		✓	✓	✓		✓					2010	2011	3.000	112
86	PUBLIC POWER COMPANY ~ ERGOTEM	CT-309	SES KARDIA PTOLEMAIS DISTRICT HEATING				✓	✓	✓							2010	2011	1.500	32
87	MOTOR OIL HELLAS S.A.	CT-313	REOF-5825: IMPROVING OF ADDITIVE SYSTEM FOR GASOIL & REOF-6014: ADDITIVE SYSTEM FOR P/S 10	✓	✓		✓	✓	✓		✓					2011	2011	500	26
88	CORAL ENERGY GROUP (ex. SHELL)	CT-314	KALOCHORI DEPOT - TANKS				✓	✓	✓							2011	2011	500	26
89	HELPE S.A.	CT-316	NEW N ₂ UNIT IN THESSALONIKI REFINERY COMPLEX		✓											2011	2012	10	10

PROJECTS REGISTER

No.	OWNER ~ CLIENT	Contract No.	PROJECT	PROVISION OF SERVICES										YEAR OF AWARD	YEAR OF COMPLETION	BUDGET OF PROJECT (Th. €)	COMPENSATION (Th. €)		
				BID PREPARATION	PERMITS ACQUISITION	PROJECT MANAG.	CIVIL ENG.	MECH. ENG.	EL. / INSTR. ENG.	QUALITY CONTROL	PROCUREMENT	ENGINEERING REVIEW	CON. MAN. / SUPERV.						
90	GREEK SUGAR FACTORY (EBZ S.A.)	CT-318	PROJECT MANAGEMENT SERVICES FOR THE REFURBISHMENT OF SUGAR FACTORIES IN XANTHI AND LARISA			✓										2011	2012	1.500	150
91	CORAL ENERGY GROUP	CT-319	NEW ONSHORE & OFFSHORE FUEL PIPELINE	✓			✓	✓	✓	✓						2012	2013	2.500	43
92	EMBIRIA S.A.	CT-321	19 PV STATIONS	✓			✓									2012	2012	-	12
93	J&P - AVAX	CT-324	MEGALOPOLIS PIPELINE - DESFA				✓	✓	✓	✓	✓					2012		38.000	210
94	CORAL GAS	CT-325	STRUCTURAL DESIGN OF STEEL SHELTER AND CONCRETE PLATFORM				✓	✓	✓							2012	2012	650	17
95	DESFA	CT-327	THE COMPLETION OF STEEL PIPELINE NETWORK IN AG.THEODORI - KALAMAKI			✓								✓		2012	2012	-	19
96	HERMES	CT-328	AIR BP LARNACA FUEL FARM PROJECT				✓	✓	✓			✓				2012	2012	-	3
97	CORAL S.A.	CT-329	NEW PIPERACK - KALOCHORI	✓	✓		✓									2012	2012	110	13
98	MTL INTERNATIONAL	CT-330	CYPRUS CCPP 200MW	✓	✓			✓								2012	2013	-	71
99	TRACTEBEL ENGINEERING S.p.A.	CT-331	TRANS ADRIATIC PIPELINE (TAP)		✓		✓	✓		✓		✓				2013		-	48
100	MOTOR OIL HELLAS S.A.	CT-332	BEARING CAPACITY OF TOP HEAD V-1401 WITH FINITE ELEMENT ANALYSIS (FEA)					✓								2013	2013	-	3
101	AIR BP NORTH EAST EUROPE ~ CUKUROVA AIRPORT	CT-333	COST ESTIMATION FOR AVIATION FUEL CENTER IN CUKUROVA AIRPORT - TURKEY				✓	✓	✓			✓				2013		-	3
102	CORAL S.A.	CT-336	OPERATION PERMIT FOR THE REFURBISHMENT OF THE AMFILOCHIA FUEL STATION		✓											2013	2014	-	3
103	EBZ S.A.	CT-337	SEWEAGE NETWORK IN PLATI DEPOT				✓	✓								2013	2013	-	19

PROJECTS REGISTER

No.	OWNER ~ CLIENT	Contract No.	PROJECT	PROVISION OF SERVICES										YEAR OF AWARD	YEAR OF COMPLETION	BUDGET OF PROJECT (Th. €)	COMPENSATION (Th. €)	
				BID PREPARATION	PERMITS ACQUISITION	PROJECT MANAG.	CIVIL ENG.	MECH. ENG.	EL. / INSTR. ENG.	QUALITY CONTROL	PROCUREMENT	ENGINEERING REVIEW	CON. MAN. / SUPERV.					
104	MOTOR OIL HELLAS S.A.	CT-338	MOTOR OIL HELLAS U-1500 HDS UNIT ENERGY UPGRADE				✓	✓	✓	✓					2013	2014	30.000	24
105	CORAL S.A.	CT-339	TRUCK LOADING STATION DESIGN IN KALOCHORI PREMISES				✓	✓	✓	✓					2013	2013	-	17
106	MOTOR OIL HELLAS S.A.	CT-340	T-706 TANK ROOF DESIGN					✓							2013	2013	-	3
107	PETSOULAS S.A.	CT-341	HDD OF PINIOS RIVER				✓	✓							2013	2013	-	3
108	EKO SA	CT-342	DISMANTLING OF GAS STATION											✓	2013	2014	-	3
109	MDSA Arabia	CT-343	EDUCATIONAL - TRAINING PROGRAM OF IRAQI ENGINEER			✓									2014	2014	-	178
110	MARITECH - POWER SUB LINK	CT-344	HORIZONTAL DIRECTIONAL DRILLING OF HDPE PIPELINE IN NORMANDY				✓	✓							2014	2014	-	4
111	ENIMEX S.A.	CT-345	REVIEW & UPDATE OF AS BUILT DOCUMENTATION FOR 3rd & 4th GROUP OF M/R STATIONS OF NATUR GAS			✓	✓	✓	✓	✓			✓		2014	2014	-	25
112	METKA S.A.	CT-346	SAMSUN CCPP - CATHODIC PROTECTION SYSTEM OF MOTORIZED PRESSURE PENSTOCK				✓	✓	✓						2014	2014	-	5
113	METKA S.A.	CT-347	OPEN CYCLE GAS TURBINE POWER PLANT OF 590,726 MW, HASSI R'MEL - ALGERIA STRUCTURAL DESIGN STUDIES				✓	✓							2014	2014	-	10,7
114	IKOS OLIVIA S.A.	CT-348	RESTORATION AND UPGRADING INTO TO 5* HOTEL OF GERAKINA BEACH HOTEL IN SITHONIA, CHALKIDIKI, GREECE				✓			✓					2014	2015	-	20
115	MASOUTIS S.A.	CT-351	UPGRADING AND PERMITTING PROCESS FOR 10 SUPER MARKET STORES OF MASOUTIS S.A. GROUP OF COMPANIES				✓	✓	✓						2014	2014	-	40
116	EKO - HELLENIC FUELS	CT-352	SUPERVISION & INSPECTION OF LPG INSTALLATION IN INDUSTRIAL ACTIVITIES & RETAIL MARKET					✓	✓				✓		2016	2016	-	6
117	METKA S.A.	CT-355	COMPLETION OF DESIGN FOR THE PROJECT "RAILWAY LINE KIATO-RODODAFNI"						✓						2015	2017	-	30,3

PROJECTS REGISTER

No.	OWNER ~ CLIENT	Contract No.	PROJECT	PROVISION OF SERVICES										YEAR OF AWARD	YEAR OF COMPLETION	BUDGET OF PROJECT (Th. €)	COMPENSATION (Th. €)	
				BID PREPARATION	PERMITS ACQUISITION	PROJECT MANAG.	CIVIL ENG.	MECH. ENG.	EL. / INSTR. ENG.	QUALITY CONTROL	PROCUREMENT	ENGINEERING REVIEW	CON. MAN. / SUPERV.					
118	MOTOR OIL HELLAS S.A.	CT-357	DESIGN OF 7 NEW TANKS AND RELATED PIPELINES FOR THE CORINTH REFINERY				✓	✓	✓	✓	✓	✓	✓	✓	2015	2017	195,000	287,5
119	PPC/PTOLEMAIS NORTH GREECE	CT-359	CUNSLTANTS, SUPERVISION FOR GUIDELINES BOOK PIPING / CONECTIONS / OPERATION NEW SYSTEM OF 3000m ³ TANK AND ACCESSORIES			✓	✓	✓	✓	✓	✓	✓	✓	✓	2015	2017	-	18,9
120	LPC S.A. (ex. CYCLON HELLAS S.A.)	CT-360	SURVEY OF ISOMETRIC LINES & DETAIL DESIGN, DWGS etc. OF "CYCLON S.A." PREMISES			✓	✓	✓	✓	✓					2015	2017	-	114,7
121	HEL.PE/THESS.	CT-362	DETAILED DESIGN OF NEW LPG LOADING STATION		✓	✓	✓	✓	✓	✓					2015	2016	-	5,45
122	MOTOR OIL HELLAS S.A.	CT-364	ENGINEERING SERVICES FOR THE INSTALLATION OF 2nd REBOILER FOR DIMERSON UNIT		✓	✓	✓	✓	✓	✓			✓		2015	2016	-	8
123	SANI S.A.	CT-366	DETAILED DESIGN SERVICES FOR THE REFURBISHMENT OF SHOPING CENTER IN SANI RESORT		✓	✓	✓	✓	✓	✓			✓		2015	2016	-	6
124	MOTOR OIL HELLAS S.A.	CT-367	DRAFTING SERVICES		✓	✓	✓	✓	✓	✓					2015	2016	-	11
125	HEL.PE/THESS	CT-368	PERMITTING SERVICES FOR THE LEGALIZATION OF BUILDING STRUCTURES		✓										2016	2016	-	2,8
126	MOTOR OIL HELLAS S.A.	CT-369	DETAIL DESIGN OF NEW API BASIN				✓	✓	✓	✓	✓				2016	2017	-	12,6
127	TRACTEBEL ENGINEERING S.p.A.	CT-370	BASIC DESIGN AND OTHER RELATED STUDIES FOR A TRUCK LOADING STATION AT REVITHOUSSA LNG TERMINAL				✓	✓	✓	✓					2016	2017	-	17,92

PROJECTS REGISTER

No.	OWNER ~ CLIENT	Contract No.	PROJECT	PROVISION OF SERVICES										YEAR OF AWARD	YEAR OF COMPLETION	BUDGET OF PROJECT (Th. €)	COMPENSATION (Th. €)	
				BID PREPARATION	PERMITS ACQUISITION	PROJECT MANAG.	CIVIL ENG.	MECH. ENG.	EL. / INSTR. ENG.	QUALITY CONTROL	PROCUREMENT	ENGINEERING REVIEW	CON. MAN. / SUPERV.					
128	CORAL S.A.	CT-371	ALEXANDROUPOLIS DEPOT - BASIC DESIGN FOR TERMINAL EXTENSION STUDY & ENVIROMENTAL PERMISSION				✓	✓	✓	✓					2016	2018	-	23,4
129	BONATTI J-P AVAX	CT-374	PROVISION OF ENGINEERING REPORT/ SUPPORT OF STUDY OF ENGINEERING CRITICAL ASSESSMENT TO BE PERFORMED IN CONNECTION WITH THE PROJECT CALLED: "EPC ONSHORE PIPELINE CONSTRUCTION - TRANS ADRIATIC PIPELINE PROJECT – GREECE - SECTION 2 AND 3"												2016	2016	-	12,1
130	DIAXON SA	CT-376	DESIGN, SUPERVISION AND PERMITTING SERVICES FOR THE LEGALIZATION OF NEW UNIT IN THE REFINERY OF DIAXON		✓		✓	✓	✓	✓					2016	IN PROGRESS	-	19,1
131	BONATTI S.p.A	CT-379	PERMITTING SERVICES RELEVANT TO 14 BLOCK VALVE STATIONS AND 1 SCRAPER STATION TO BE INSTALLED ALONG THE 2ND AND 3RD SECTION OF THE TRANS ADRIATIC PIPELINE (TAP)		✓					✓					2016	IN PROGRESS	-	43,6
132	BONATTI J-P AVAX	CT-381	SUPERVISION SERVICES FOR OBTAINING APPROVAL FOR CONSTRUCTION AND BUILDING PERMIT ISSUANCE IN CONNECTION WITH THE PROJECT CALLED "EPC ONSHORE PIPELINE CONSTRUCTION-TRANS ADRIATIC PIPELINE PROJECT - GREECE - SECTION 2 AND 3" (TAP)		✓										2016	IN PROGRESS	-	41,6
133	HELPE S.A.	CT-383	FIRE FIGHTING PERMIT FGRU & ADDITIONAL DECLARATION OF AUTHORITIES		✓			✓	✓						2017	2018	-	9,3
134	HELPE S.A.	CT-384	ADEQUACY STUDY OF EXTINGUISHING CAPACITY OF IRRIGATION AUTONOMOUS SYSTEMS FOR THE UNDER ALTERATION LOADING ISLE IN KALOCHORI AND IONIA SFBA		✓			✓							2017	2018	-	2,5
135	BONATTI J-P AVAX	CT-385	PROVISION OF STUDIES ON ROAD SIGNS FOR THE REROUTING OF TRAFFIC AT THE LOCATIONS WHERE TAP PIPELINE INTERSECTS THE ROAD NETWORK WITH THE PROJECT CALLED: "EPC ONSHORE PIPELINE CONSTRUCTION - TRANS ADRIATIC PIPELINE PROJECT – GREECE - SECTION 2 AND 3"		✓		✓								2017	IN PROGRESS	-	40

PROJECTS REGISTER

No.	OWNER ~ CLIENT	Contract No.	PROJECT	PROVISION OF SERVICES										YEAR OF AWARD	YEAR OF COMPLETION	BUDGET OF PROJECT (Th. €)	COMPENSATION (Th. €)	
				BID PREPARATION	PERMITS ACQUISITION	PROJECT MANAG.	CIVIL ENG.	MECH. ENG.	EL. / INSTR. ENG.	QUALITY CONTROL	PROCUREMENT	ENGINEERING REVIEW	CON. MAN. / SUPERV.					
136	ELPEDISON A.E.	CT-386	FIRE STUDY MODIFICATION DIESEL UNLOADING & CERTIFICATION FOR THE SHAFT UNLOADING		✓			✓	✓						2017	2018	-	1,9
137	ELPEDISON A.E.	CT-387	AUTHORISATION FOR E2-E10		✓		✓								2018	IN PROGRESS	-	6,2
138	HELPE S.A.	CT-388	FIRE PROTECTION STUDY OF PUMPSTATION LPG					✓	✓				✓		2017	2018	-	2,4
139	HELPE S.A.	CT-389	FIRE EXTINGUISHING STUDY OF CHEMICAL DEPARTMENT					✓	✓				✓		2018	IN PROGRESS	-	30,8
140	HELPE S.A.	CT-390	FIRE EXTINGUISHING STUDY OF BUILDING XΔ & FIRE EXTINGUISHING STUDY OF BUILDING XX					✓	✓				✓		2017	IN PROGRESS	-	4,5
141	HELPE S.A.	CT-392	STRUCTURAL STUDY OF NEW BUILDING SIB				✓		✓						2018	IN PROGRESS	-	15,8
142	HELPE S.A.	CT-393	BUILDING PERMIT OF NEW UNIT OF FLARE GASES RECONERY INSIDE	✓									✓		2018	IN PROGRESS	-	3,4
143	Oman Oil Marketing Company SAOG	CT-394	DUQM BUNKER TERMINAL FEED PROJECT	✓		✓	✓	✓	✓				✓		2018	IN PROGRESS	-	223,250 \$
144	ENEL GREEN POWER HELLAS S.A.	CT-395	SUPERVISION & CONSTRUCTION ASSISTANCE SERVICES IN WIND FARM OF S. EVOIA						✓				✓		2018	IN PROGRESS	-	460
145	BONATTI J-P AVAX	CT-396	EPC ONSHORE PIPELINE CONSTRUCTION - TRANS ADRIATIC PIPELINE PROJECT - GREECE - SECTION 2 AND 3_DEMARICATION OF BOUNDARY DRAWINGS FOR BVS STATIONS										✓		2018	IN PROGRESS	-	19
146	CORAL A.E.	CT-397	EXTENSION OF THE ENTRANCE OF THE CORAL S.A. INSTALLATION IN KALOCHORI (THESSALONIKI)				✓								2018	2018	-	8,8
147	HELPE S.A.	CT-399	DETAILED STUDY OF FIRE FIGHTING PROTECTION OF THE NEW PUMP STATION IN THE STATION OF RAIN WATER IN KALOCHORI TERMINAL OF HELPE					✓	✓						2018	IN PROGRESS	-	2,3

PROJECTS REGISTER

No.	OWNER ~ CLIENT	Contract No.	PROJECT	PROVISION OF SERVICES										YEAR OF AWARD	YEAR OF COMPLETION	BUDGET OF PROJECT (Th. €)	COMPENSATION (Th. €)	
				BID PREPARATION	PERMITS ACQUISITION	PROJECT MANAG.	CIVIL ENG.	MECH. ENG.	EL. / INSTR. ENG.	QUALITY CONTROL	PROCUREMENT	ENGINEERING REVIEW	CON. MAN. / SUPERV.					
148	MOTOR OIL HELLAS S.A.	CT-401	STUDY OF SPECIFIC EVOLUTION OF THE CONDITIONS AND TERMS OF THE ANCHORAGE OF MOTOR OIL HELLAS (MOH S.A.) IN NEW KARVALI (KAVALA)		✓					✓					2018	IN PROGRESS	-	4
149	HELPE S.A.	CT-402	STUDY FIRE FIGHTING PROTECTION OF THE UPGRADING OF THE WASTE WATER TREATMENT (MKYA) UNIT IN THESSALONIKI INDUSTRIAL INSTALLATIONS OF HEL.PE. AE AND ISSUE OF A CERTIFICATE OF FIRE PROTECTION		✓	✓			✓	✓					2018	2019	-	7,8
150	DEDA S.A.	CT-403	CONNECTIONS OF HOUSEHOLD AND COMMERCIAL CUSTOMERS IN LOW PRESSURE NETWORKS (4bar) IN CITY LAMIAS, CHALKIDA, SERRES, KATERINI, XANTHI AND KOMOTINI											✓	2019	IN PROGRESS	-	19,44
151	HELPE S.A.	CT-404	STUDY OF FIRE FIGHTING PROTECTION TANK TK-848 OF THESSALONIKI INDUSTRIAL ESTABLISHMENTS AND PUBLICATION OF FIRE PROTECTION CERTIFICATE		✓				✓	✓					2019	IN PROGRESS	-	6,2
152	HELPE S.A.	CT-405	STUDY OF THE OPTIMIZATION AND EFFICIENCY OF FIREWATER SYSTEMS OF HELPE		✓				✓	✓					2019	IN PROGRESS	-	43,5
153	HELPE S.A.	CT-406	BUILDING PERMIT OF THE NEW UPGRADING PROJECT WWT (TANK TK-841B AND T-921)		✓										2019	IN PROGRESS	-	16,8
154	HELPE S.A.	CT-407	BUILDING PERMIT OF THE NEW SULFUR UNIT		✓										2019	IN PROGRESS	-	6,8
155	DEDA S.A.	CT-408	CONNECTIONS OF HOUSEHOLD AND COMMERCIAL CUSTOMERS IN LOW PRESSURE NETWORKS (4bar) IN CITY LAMIAS, CHALKIDA, SERRES AND KATERINI											✓	2019	IN PROGRESS	-	17,1